



Foxy Boxy Bag

This funky boxy bag is a fab mid-large sized over-the-shoulder handbag. Featuring a folded over top and large tab with magnetic clasp, this bag is roomy enough to hold all of your everyday essentials. It is fully lined, with a simple cell phone pocket inside.



Bag Dimensions are 14 inches wide x 8 inches high (folded) and 5 inches deep.

You Will Need:

1 metre (1 yard) fabric for the outer (We used a heavier cotton drill fabric)

½ metre (¾ yard) fabric for the lining

1 metre (1¼ yards) medium-weight fusible interfacing

¾ metre (1 yard) light-weight fusible pella

4 "O" rings



1 small magnetic clasp

Piece template plastic measuring 5 inches x 14 inches approx.

Bead or other for embellishing the tab. We used a flat pendant style medallion with fabric appliques. Look around – a large button, or felt designs etc would work just as well.

Scraps of heavy – mid weight interfacing for inserting magnetic clasp

Bag Construction:

Please read all instructions fully before beginning. All measurements are in inches, and unless stated otherwise, a ¼ inch seam allowance has been used.

Referring to the attached Cutting Guide, carefully cut the required bag pieces from the bag fabrics, interfacing and pellon as required. Iron the interfacing to the back of each piece as indicated in the Cutting Guide, and fuse the pellon on top of the interfacing on the wrong side of the bag outer sides, handle and base strip.

Handles:



Start with the four tabs that attach the “O” rings to your bag. Using your iron, fold over a ¼ inch seam allowance on one of the 4 inch sides. Then fold each tab in half with wrong sides together along that 4 inch side. Press to crease. Open out and fold in each side to that centre line and press again. Re-fold together so that each tab has 4 fabric layers and one end tucked in. Topstitch around all sides to secure.

As shown, loop 1¼ inches of the raw edged end of each tab through an “O” ring and sew to itself to secure the “O” ring.

The handles are made in much the same way. Press under the seam allowance at each 4 inch end of the handle strips, then fold in half, open out and fold each side in to that centre line again.

Re-fold and pin before topstitching around all four sides of each handle.

Loop 1½ inches of one end of the handle through an “O” ring as shown above and sew to itself as you did for the tab. Make sure that both ‘wrong’ sides with folded ends are facing the same way. Repeat for the other end of that handle, and then for the second bag handle to finish.



Bag Tab:

Next, make the large bag tab. First insert the magnetic clasp. Fold one tab end in half widthways, and mark the point on that line $1\frac{1}{4}$ inches up from the end for the position of the clasp.

Cut a square of heavy interfacing approximately 1 inch square and iron it to the wrong side to cover the marked dot on the front. This will help protect the fabric in your bag and stop the clasp from wearing through with repeated use. (You can use the medium weight interfacing here if you do not have any heavy weight, although the heavier weight gives better protection.)

Push the two prongs of the top half of the clasp (with the centre part raised) into the right side of the fabric to create indents, then use your unpicker tool to make two tiny slits in the fabric there, to push the clasp through. Make the slits smaller than the width of the prongs. Push the clasp prongs through to the back, turn to the back and slip on the 'washer' provided with the clasp and fold the prongs over onto themselves, over the back of the clasp. (If you splay them out, you run the risk of them eventually piercing through the bag fabric.)



Cut an approximate 1 inch square of the medium weight interfacing and place it over the top of the folded prongs on the wrong side of the tab. Use the iron again to fuse it in place, as another safeguard to protecting your bag fabric.

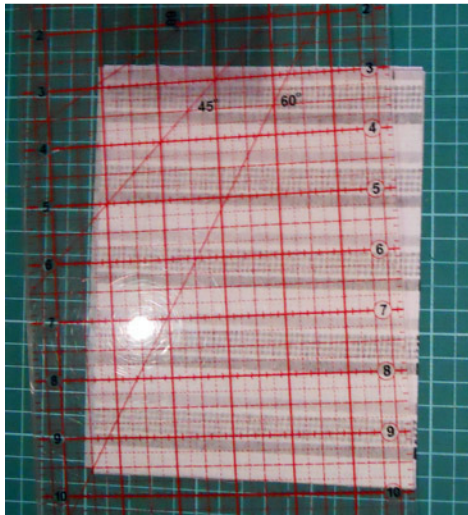
Using your iron, fold up a $\frac{1}{2}$ inch seam allowance down one of the two long sides on each tab piece. With right sides together, pin the other two long sides together and sew – down the length of the tab pieces on the un-folded edge, and across the short end where the magnetic clasp was inserted. Trim corners, turn right sides out and press. Tuck in the folded seam allowances on the other long side and pin and topstitch around all 4 sides.

Assembly:

First, insert the remaining half of the magnetic clasp on the right side of the bag front panel.

Fold the panel in half widthways to find the centre point on the bottom edge, and measure up $3\frac{1}{2}$ inches on that line to mark the point where the clasp will be.

As you did for the first half, iron a square of heavy interfacing to the wrong side under where the dot is marked on the front. Use the clasp to mark where to make the slits, and push the prongs through to the wrong side. Slip on the washer and fold prongs outwards. Cover with a second square of interfacing and press.



Next, trim the side panels. Lay each bag outer and lining side panel so that the short 5½ inch end faces you.

As shown, measure in a ½ inch from each top corner and rule a line from that point to the bottom corner on each side.

Cut on that line to trim each panel so the top is slightly narrower than the base.

Now attach the tab and handles to the two bag outer panels.

On the back panel, fold in half widthways to find the centre line. Position the tab (with the raw edge at the bottom,) over that line so it is centred and sits straight up the panel as shown.

Measure up 7 inches from the bottom of the tab and mark that line with a pin. Then following the same topstitched lines on the tab, sew the tab to the bag panel – up the side, across the top of the tab on the 7 inch line, down the other side and across the bottom.

Position the handles next. Each tab is 2½ inches in from the side edge, and align them so that the top stitched lines are level with that 7 inch line on the tab. Pin and topstitch in place also, following the same topstitched lines on the tab from earlier.



Repeat to sew the handle to the front panel. Measure in 2 inches from each side, and up 7 inches from the bottom, to mark where the top stitched line on each tab needs to be positioned.



With right sides together, sew the side panels to the bag front panel, making sure the narrower ends are towards the top, and the bottoms are level. They are shorter than the bag front and back panels. Open out and topstitch along each seam on the right side.

Sew the remaining side of the side panels to the bag back panel and topstitch seams again.

Lay the un-interfaced bag base strip on the wrong side of the bag outer base piece. Sew along both long sides with a scant seam to form a 'pocket' for the template plastic base stiffener to be inserted in later.

With right sides together, pin and sew the base to the bottom of the bag outer, taking care to leave one end of the base 'pocket' open.

Trim the template plastic to fit and round corners before inserting it into the base 'pocket' and turning bag right sides out.

Lining:

This is a very simple lining and it is made in the same way as the bag outer.

First make the pocket. With right sides together, sew up the sides and across the top of the pocket pieces. Clip corners and turn right sides out. Press flat and also press under the seam allowance at the bottom raw edges.

Topstitch across the top of the pocket and position it on the bag lining front panel, centred and 1 inch up from the bottom edge. Pin and topstitch down each side and across the bottom to complete.

As you did for the bag outer, sew the side panels to the front and back panels, matching bottom edges and ensuring the narrower edge of the side panels is towards the top.

Again, with right sides together pin and sew the bag base to the lining bag, making sure to leave most of one of the middle of one of the sides unsewn, to turn the bag through later.

Put the bag outer into the lining bag so that right sides are together (and the handles and tab are in between the layers) and pin around the top edges. Sew carefully and turn right sides out. Topstitch around the top edges to finish it neatly.

Hand sew on the embellishment you selected for the end of your bag tab. Fold over the front end to the back, and the back end to the front with your tab over the top and you're ready to go and try it out!



Love Bags?

Collect our Best and Newest patterns as a Member of our fantastic 'Bag of the Month Club'. Take advantage of the Excellent Value we offer, where for **less than \$10 per month**, you will **receive TWO Brand New patterns** (one every two weeks) by email. Go to www.BagMakingPatterns.com for more downloads, and to Register your Membership today.

For more **FREE Downloadable Quilt Patterns**, visit www.QuiltBlockoftheMonthClub.com too. At the Quilt Block of the Month Club, we have created a Large range of Unique Quilt Designs for those of you who appreciate a slightly different sense of style, a twist on the classics or something with a bit 'more', that will make your quilts Stand Out from the rest.

As our Premium Club, the Quilt Block of the Month Club offers Members access to **ALL** of the quilt patterns on our website – **make as many as you like at the same time, for no extra cost**. Members also receive our Weekly Newsletter with Hints and Tips, more Blocks and Bonus Projects, AS WELL AS FREE Membership in our Bag Making Patterns Club too! Plus a copy of our Premium Online Quilt Magazine each month too!

Perhaps you just want a pattern? Check out our Growing Range of **Bag and Quilt Pattern Sets** for sale on easy to use Cd-Rom at www.Quilts-n-Bags.com . These pattern sets are packed with value and are suitable for both PC or Mac computers.


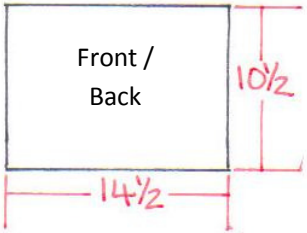
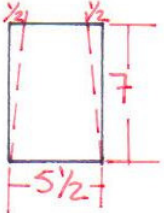
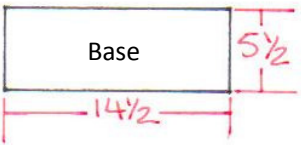
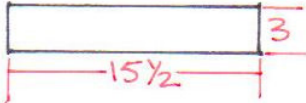
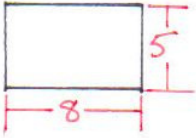
And Make Sure You Stay up to Date with Quilting News through our Online Quilt Magazine. Go to www.OnlineQuiltMagazine.com and Register to receive Your **FREE Standard Monthly Magazine (or the Super-Cheap Premium Issue) and Bonus downloads** Today.

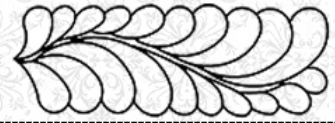
We look forward to meeting You again online!

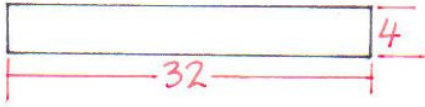
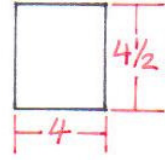
Jody and Annette



Foxy Boxy Bag Cutting Guide

	<p>Cut the required number of each piece according to the measurements on each diagram.</p> <p>* Please note – all measurements are in inches.</p>
 <p>Front / Back</p>	<p>Cut 2 outer fabric Cut 2 lining Cut 2 pellon Cut 4 medium-weight interfacing</p>
 <p>Side</p>	<p>Cut 2 outer fabric Cut 2 lining Cut 2 pellon Cut 4 medium-weight interfacing</p>
 <p>Base</p>	<p>Cut 1 outer fabric Cut 2 lining Cut 1 pellon Cut 2 medium-weight interfacing</p>
 <p>Bag Tab</p>	<p>Cut 2 outer fabric Cut 1 pellon – 2 inches wide Cut 2 medium-weight interfacing</p>
 <p>Pocket</p>	<p>Cut 2 lining Cut 1 medium-weight interfacing</p>



 <p style="text-align: center;">Handle</p>	<p>Cut 2 outer fabric Cut 2 pellon – 2 inches wide Cut 2 medium-weight interfacing</p>
 <p style="text-align: center;">Handle Tab</p>	<p>Cut 4 outer fabric Cut 4 medium-weight interfacing</p>